

---

## PAYMENT INFORMATION

---

Name \_\_\_\_\_

Address \_\_\_\_\_

City \_\_\_\_\_ State \_\_\_\_ Zip \_\_\_\_\_

Phone \_\_\_\_\_

Email \_\_\_\_\_

My check is enclosed.

*(Payable to Thayer Symphony Orchestra)*

Please charge my:

Visa                      Mastercard

Discover                AMEX

Name on Card \_\_\_\_\_

Card # \_\_\_\_\_

Exp. Date \_\_\_\_\_

Please fill out and return this form  
with your payment.

*Questions?*

For more information call (978) 466-1800 x11

THAYER SYMPHONY ORCHESTRA  
14 Monument Square, Fourth Floor  
Leominster, MA 01453

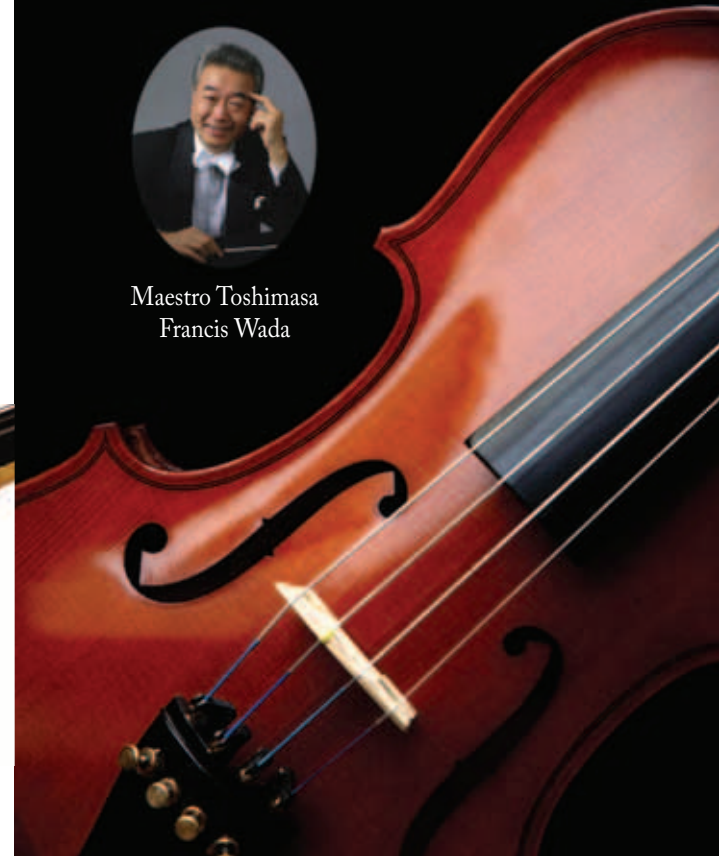


*Celebrating our 36th Season*  
2009-2010 SEASON TICKET INFORMATION

# THAYER SYMPHONY ORCHESTRA



Maestro Toshimasa  
Francis Wada





*"Thayer Symphony Orchestra is quite simply one of the finest ensembles of its kind."*

— Ron Della Chiesa, WGBH

The performance venue is located at the Dukakis Performing Arts Center at Monty Tech, Fitchburg, MA. All concerts start at 7:30 p.m.

**SATURDAY, OCTOBER 24, 2009**

*"Elegance III" A Night of Chamber Music*



Music of Bach, Haydn and Mozart performed by the TSO's Principal Chairs & others. Audience will be treated to beautiful visual effects of Europa's castles and palaces.

**SATURDAY, DECEMBER 12, 2009**

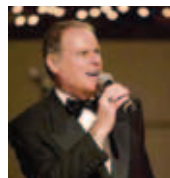
*Holiday Family Concert with the Salisbury Singers*



Due to popular demand by the audience, over one hundred musicians, TSO instrumentalists and the Salisbury Singer's Voices join in celebration of the Holiday Music.

**SATURDAY, FEBRUARY 13, 2010**

*Valentine's Concert with Steve Marvin, Vocalist*



Steve Marvin, New England's premier vocal entertainer, will entertain you with songs by Tony Bennett, George Gershwin and Frank Sinatra.

**SATURDAY, MARCH 13, 2010**

*Classically Irish Music Night*



Danny Boy, Londonderry Air, Irish Rhapsody, The Wearing of the Green, The Minstrel Boy and more well loved Irish songs will delight the audience whether you are Irish or not.

Please join us for a special concert in Clinton:

**FRIDAY, DECEMBER 11, 2009**

*Concert in Clinton Town\**

*with Clinton Middle School Symphony Singers*

*\*Not included in season ticket*

**SINGLE TICKETS**

# \_\_\_\_\_ Floor, Center @ \$35      \$ \_\_\_\_\_

# \_\_\_\_\_ Floor, Center @ \$32      \$ \_\_\_\_\_  
*(Senior Citizens: 60 years or older/Student Discount)*

# \_\_\_\_\_ Floor, Side @ \$32      \$ \_\_\_\_\_

# \_\_\_\_\_ Floor, Side @ \$28      \$ \_\_\_\_\_  
*(Senior Citizens: 60 years or older/Student Discount)*

# \_\_\_\_\_ Mezzanine @ \$28      \$ \_\_\_\_\_

# \_\_\_\_\_ Mezzanine @ \$25      \$ \_\_\_\_\_  
*(Senior Citizens: 60 years or older/Student Discount)*

**TOTAL**      \$ \_\_\_\_\_

**VENUE SEATING**

*Season tickets are available in the following sections:*

Floor Center, Floor Left and Right,  
Mezzanine Center

